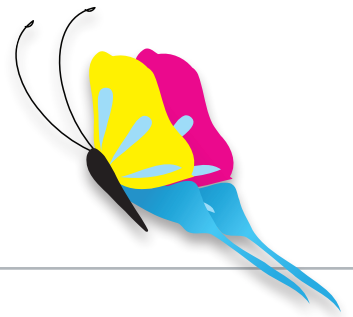


# SCAPA - MAKING PRINT COME ALIVE

## Cleaning & Mounting Recommendations

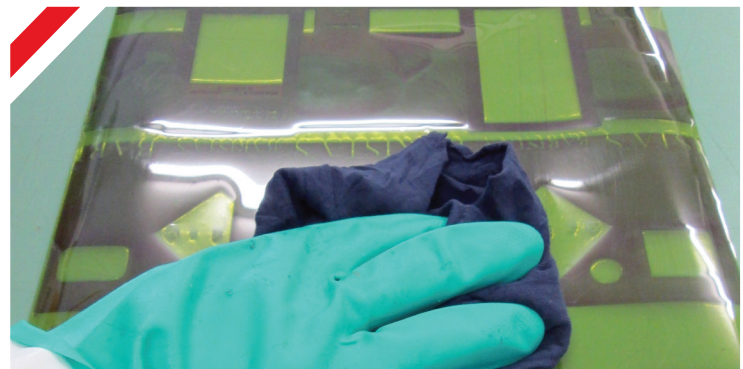


### CYLINDER AND SLEEVE CLEANING

- > Clean cylinder and sleeve removing all contamination, in particular ink and adhesive residue.
- > For surface cleaning use 50/50 Isopropyl alcohol and water.
- > Wipe the surface using a dry tissue. The cylinder and sleeve must be totally dry to prevent any pollution during the mounting process.
- > Occasionally sleeves can be damaged by nicks and scratches. These defects / irregularities can affect the level of adhesion.

### PLATE CLEANING

- > Clean plate removing all contamination, in particular ink and adhesive residue.
- > For surface cleaning use 50/50 Isopropyl alcohol and water.
- > Wipe the surface using a dry tissue. The cylinder and sleeve must be totally dry to prevent any pollution during the mounting process. This also helps to prevent plate lifting.
- > Occasionally new plates can present some contamination from the photopolymer plate making process. This can affect the level of adhesion and cause plate lifting.



**NOTE:** Ethyl Acetate (heavy solvent) can strongly affect adhesive performance and leave residue.

### TAPE MOUNTING ON THE CYLINDER AND SLEEVE

- > Apply the tape in a sweeping motion, line by line.
- > The embossed surface of the liner helps to prevent air entrapment between the tape and the cylinder / sleeve. It also enables quick and easy air bubble removal.
- > Apply consistent pressure during the mounting process. Using a squeegee will help to ensure optimum bonding between the tape and the cylinder / sleeve.

### PLATE MOUNTING ON THE TAPE

- > Apply the plate in a sweeping motion.
- > The embossed surface of the liner helps to prevent air entrapment between the tape and the plate. It also enables quick and easy air bubble removal.
- > Apply consistent pressure during the mounting process. Using a rubber roller will help to ensure optimum bonding between the tape and the plate. This is particularly important on the edge and will help to prevent plate lifting.



**SCAPA ASIA**  
Tel: +852 2439 4330

**SCAPA EUROPE**  
UK Tel: +44 (0) 161 301 7400

email: [sales@scapa.com](mailto:sales@scapa.com)

**SCAPA NORTH AMERICA**  
Tel: +1 860 688 8000

**FRANCE** Tel: +33 (0) 475 44 80 00

| [www.scapaindustrial.com](http://www.scapaindustrial.com)

**SCAPA SOUTH AMERICA**  
Tel: +55 11 2589 6003